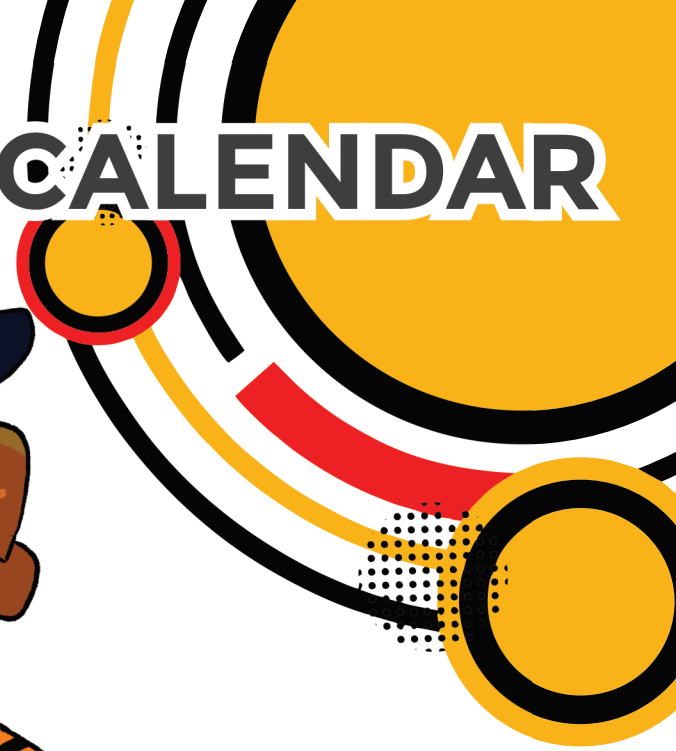


SCHOOL CALENDAR



2025-2026





AUGUST



SUNDAY MONDAY TUESDAY WEDNESDAY THURSDAY FRIDAY SATURDAY



					1	2
3	4 DIRECTORS BACK TO SCHOOL	5	6	7	8	9
10	11 TEACHERS BACK TO SCHOOL	12	A - H 13  SCHOOL SUPPLIES DROP OFF (K & E)	I - Z 14	15 PARENTS MEETING KICK OFF (E)	16  TEACHERS' TRAINING
17	18	19 BACK  SCHOOL MS & HS	20 BACK  SCHOOL ELEMENTARY	21 BACK  SCHOOL K & M	22	23
24	25	26 KICKOFF	27	28  GRANDPARENTS' DAY	29	30
31	DIAGNOSTIC ASSESSMENT (MS & HS)					



SEPTEMBER



SUNDAY	MONDAY	TUESDAY	WEDNESDAY	THURSDAY	FRIDAY	SATURDAY
	1	2	3	4 NOVATADA (MS & HS) DIAGNOSTIC ASSESSMENT (E)	5	6
7	8	9	10	11	12 FLAG SALUTE (K)	13 CHAPULTEPEC'S BATTLE
14	15 FLAG SALUTE (E)	16 DAY OFF INDEPENDENCE DAY	17	18	19	20
21	22 BEGINNING OF FALL	23	24	25	26	27
28	29	30				

WRITTEN EVALUATION (HS)

ELEMENTARY EXAMS

WRITTEN EVALUATION (MS)

ELEMENTARY EXAMS



OCTOBER



SUNDAY	MONDAY	TUESDAY	WEDNESDAY	THURSDAY	FRIDAY	SATURDAY
			1	2	3	4
5	6 REPORT CARDS (E) 	7	8	9	10 FLAG SALUTE (K) 	11
12 COLUMBUS DAY 	13 FLAG SALUTE (E) 	14	15	16	17	18 ALEMÁN CARES. POLLOCOA
19	20	21	22	23	24 FLAG SALUTE (E & K) READ. COMP. EXAM (E) 	25
26	27	28 LANTERN FESTIVAL (MS) 	29	30 ALTAR (K) 	31 HALLOWEEN & ALTAR (E & K) 	

WRITTEN EVALUATION (HS)

WRITTEN EVALUATION (MS)

ELEMENTARY EXAM



NOVEMBER



SUNDAY MONDAY TUESDAY WEDNESDAY THURSDAY FRIDAY SATURDAY



SUNDAY	MONDAY	TUESDAY	WEDNESDAY	THURSDAY	FRIDAY	SATURDAY
						1
2 DAY OF THE DEAD	3	4 REPORT CARDS (E)	5 COPA ALEMÁN	6 COPA ALEMÁN	7 COPA ALEMÁN	8 COPA ALEMÁN
WRITTEN EVALUATION (HS)						
9 COPA ALEMÁN	10	11	12	13	14	15
16	17 DAY OFF	18	19	20 FLAG SALUTE (K & E) END OF TERM (HS) MEXICAN REVOLUTION ANNIVERSARY	21 DAY OFF TEACHERS' TRAINING	22
23	24	25 FINAL ASSESSMENT (HS)	26	27 Thanksgiving	28	29
CONTINUOUS ASSESSMENT (E) FIRST EVALUATION (K)						
30						



DECEMBER





SUNDAY	MONDAY	TUESDAY	WEDNESDAY	THURSDAY	FRIDAY	SATURDAY
	1	2 REPORT CARDS (E)	3	4	5	6
	CHRISTMAS LIGHTING		MAKEUP EXAMS (HS)			
7	8 CHRISTMAS FESTIVAL	9	10	11	12 POSADA (MS & E)	13
	SPECIAL EXAMS (HS)				ELEMENTARY EXAMS	
14	15	16	17 CHRISTMAS MARKET	18	19 POSADA (MS & E)	20 CHRISTMAS BREAK BEGINS
21 BEGINNING OF WINTER	22	23	24 CHRISTMAS EVE	25 MERRY Christmas	26	27
28	29	30	31 NEW YEAR'S EVE			



JANUARY



SUNDAY	MONDAY	TUESDAY	WEDNESDAY	THURSDAY	FRIDAY	SATURDAY
				1 <i>Happy New Year</i> 2026	2	3
4	5	6 THREE KINGS DAY 	7 BACK -to- SCHOOL 	8	9	10
11	12 	13	14	15	16	17
18	19	20	21	22	23	24
25 COLEGIO ALEMÁN  OPEN HOUSE	26	27	28	29	30	31
				ALEMUN (MS & HS)		
				ELEMENTARY EXAMS		



FEBRUARY



SUNDAY	MONDAY	TUESDAY	WEDNESDAY	THURSDAY	FRIDAY	SATURDAY
1	2 DAY OFF	3	4 REPORT CARDS (E)	5 FLAG SALUTE (K & E) MEXICAN CONSTITUTION	6	7
FIRST EVALUATION (HS)						
8	9	10	11	12	13 VALENTINE'S DAY CELEBRATION	14 VALENTINE'S DAY
15	16	17 5th & 6th	18 3rd & 4th	19 1st & 2nd (DÍA DEL EJERCITO)	20	21 FEIER LÜSTIG FERNSESS
22	23	24 FLAG SALUTE (K & E) DÍA DE LA BANDERA	25	26	27	28
WRITTEN EVALUATION (MS) CONTINUOUS ASSESSMENT (E)						



MARCH



SUNDAY	MONDAY	TUESDAY	WEDNESDAY	THURSDAY	FRIDAY	SATURDAY
1	2	3	4 REPORT CARDS (E) 	MS & HS CAMBRIDGE INTERVIEWS		
8 WOMEN'S DAY 	6th Grade CAMBRIDGE INTERVIEWS		WRITTEN EVALUATION (MS) SECOND EVALUATION (K)			14 PAELLADA ALEMÁN CARES.
15	16 DAY OFF ST. PATRICK'S DAY 	17	18 	19 FLAG SALUTE (K) 	20 DAY OFF TEACHERS' TRAINING & BEGINNING OF SPRING 	21
22	23 FLAG SALUTE (E) 	24	25	26	27	28
ELEMENTARY EXAMS						
29 HOLY WEEK 	30	31				



APRIL



SUNDAY	MONDAY	TUESDAY	WEDNESDAY	THURSDAY	FRIDAY	SATURDAY
			1	2	3	4
5	6	7	8	9	11	10
12	13 BACK TO SCHOOL	14	15	16	17	18
WRITTEN EVALUATION (MS)						
19	20	21	22	23	24	25
WRITTEN EVALUATION (MS)						TALENT SHOW
26	5th & 6th	27	3rd & 4th	28	1st & 2nd	29
	SCIENCE FAIR (E)			HAPPY CHILDREN'S DAY		
	CONTINUOUS ASSESSMENT (E)					
	CONTINUOUS ASSESSMENT (HS)					



MAY



SUNDAY MONDAY TUESDAY WEDNESDAY THURSDAY FRIDAY SATURDAY

1	2				1 DAY OFF LABOR DAY	
---	---	--	--	--	---------------------------	--

3	4 DAY OFF	5 FLAG SALUTE (K & E)	6	7	8 MOTHER'S DAY CELEBRATION	9
---	--------------	--------------------------	---	---	-------------------------------	---

10 MOTHER'S DAY	11	12 9th & 12th PHOTOSHOOT	13	14 TEACHERS' DAY CELEBRATION	15 DAY OFF TEACHERS' DAY	16
--------------------	----	-----------------------------	----	---------------------------------	--------------------------------	----

17	18	19	20	21 ★ ALEMÁN DE ORO	22 STUDENTS' DAY	23
----	----	----	----	--------------------------	---------------------	----

24 25 26 27 28 29 30

FINAL ASSESSMENT (HS)
ELEMENTARY EXAMS

31						
----	--	--	--	--	--	--





JUNE

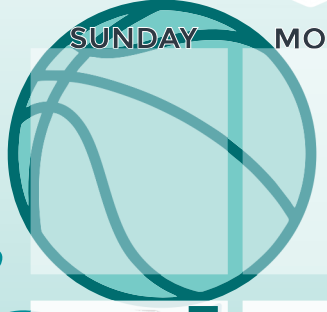
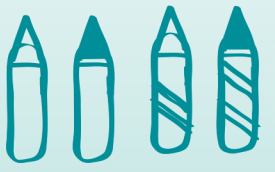


SUNDAY	MONDAY	TUESDAY	WEDNESDAY	THURSDAY	FRIDAY	SATURDAY
	1	2	3	4	5	6
	CONTINUOUS ASSESSMENT (MS)			MAKEUP EXAMS (HS)		
			MONTERREY TRIP (E)			
7	8	9	10	11	12	13
				SCIENCE FAIR MS & HS	HS	
	CONTINUOUS ASSESSMENT (E)			SPECIAL EXAMS (HS)		
14	FATHER'S DAY	15	16	17	18	20
SAN ANTONIO TRIP (MS)				GRAD		
	RECOVERY PERIOD 7th & 8th (MS)					
21	22	23	24	25	26	27
	RECOVERY PERIOD 9th (MS)					
28	29	30				
	START SUMMER CAMP					





JULY



SUNDAY	MONDAY	TUESDAY	WEDNESDAY	THURSDAY	FRIDAY	SATURDAY
			1	2	3	4
5	6	7	8	9	10	11
12	13	14	15	16 BEGINING OF SUMMER	17	18
19	20	21	22	23	24 FINISH	25
26	27	28	29	30	31	

